



ZIMBABWE SCHOOL EXAMINATIONS COUNCIL
General Certificate of Education Ordinary Level

WOOD TECHNOLOGY AND DESIGN

4059/2

Paper 2 Practical Test

SPECIMEN PAPER

3 hours 10 minutes

Additional materials:

As listed in Instructions to Supervisors

TIME 3 hours 10 minutes

INSTRUCTIONS TO CANDIDATES

Please see page 2.

INFORMATION FOR CANDIDATES

All dimensions are in millimetres.

This specimen paper consists of 4 printed pages and an insert.

Copyright: Zimbabwe School Examinations Council, Specimen paper.

©ZIMSEC Specimen paper

[Turn over

GENERAL NOTES

- * A second supply of wood is **not** allowed. If you make a mistake, do your best to work as near to the dimensions of the drawing as possible. **All** pieces of wood should be finished to the correct lengths and their ends neatly trimmed with a plane.
- * You may use your discretion where dimensions are **not** given.
- * You may use any of the ordinary hand tools and or machines, but **do not** use glue, glass paper, files, rasps or scrapers.
- * An unfinished piece of work, carefully done, may gain more marks than one that is completed but is inaccurate and shows poor workmanship.
- * Additional marks may be gained if the pencil marks are slightly cleaned off with a finely set smoothing plane before being assembled.
- * Write your name, centre number and candidate number boldly and clearly on **each** of the pieces of wood in capital letters. Even if you do not complete the test, you must however, return **all** the wood, with the exception of waste.
- * Assemble your work and place it in a plastic bag before handing it to your invigilator.

PRACTICAL TEST

The pictorial drawing in **Figure 1** shows details of an office table. **Figure 2** shows the **front view**, **end view** and **plan** of part of the table.

You are required to:

Make the portion enclosed by the circle in **Figure 1** and work from the sizes given in orthographic projection in **Figure 2** shown on the **Inserts 1** and **2**.

Chamfer the bottom piece **A** as instructed on **Figure 1**.

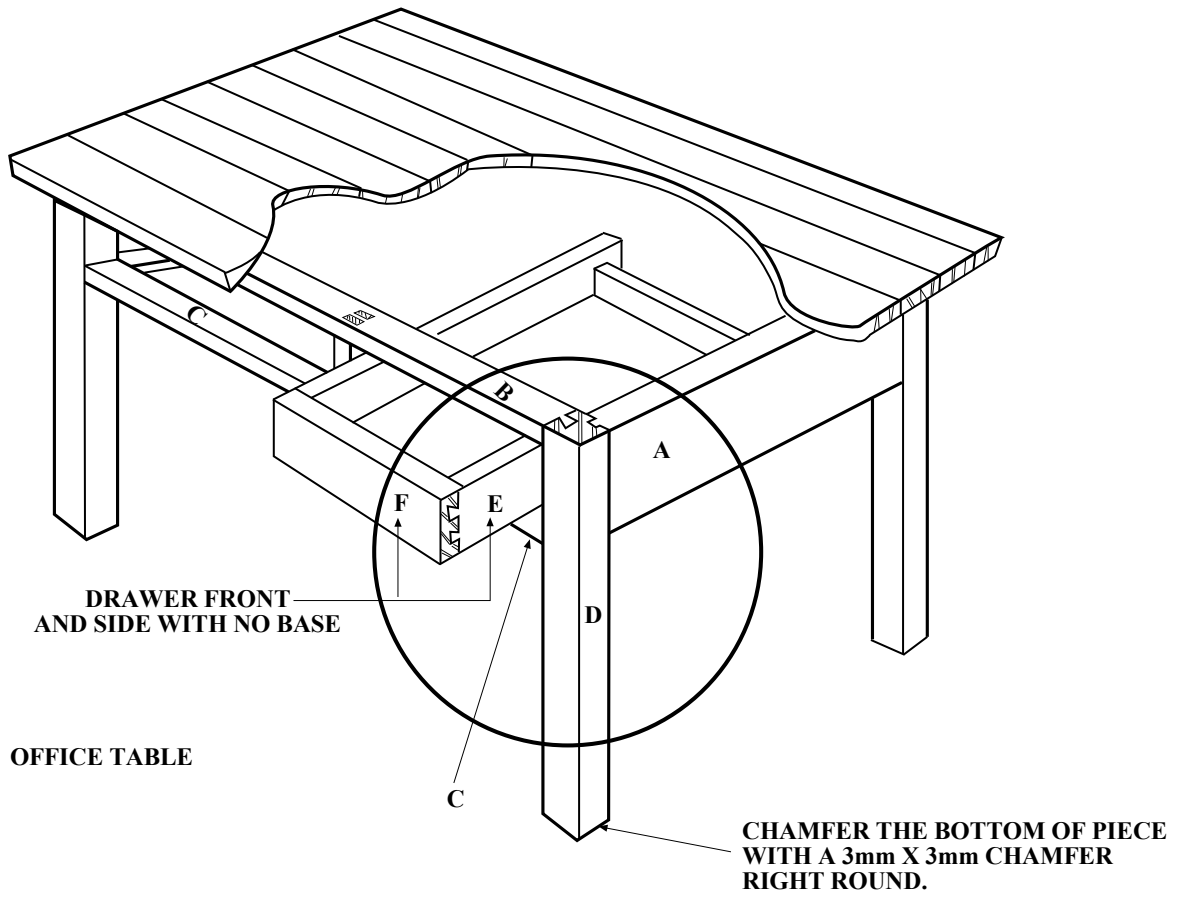
Use a dovetail slope of **1:7**.

Any measurements omitted are left to your discretion.

The following pieces of wood previously prepared to size are to be used:

Piece A	-	150 x 110 x 18
Piece B	-	130 x 40 x 18
Piece C	-	145 x 40 x 18
Piece D	-	205 x 40 x 40
Piece E	-	160 x 50 x 15
Piece F	-	145 x 50 x 20

ALL MEASUREMENTS ARE IN MILLIMETRES



NOT DRAWN TO SCALE

Fig. 1

4

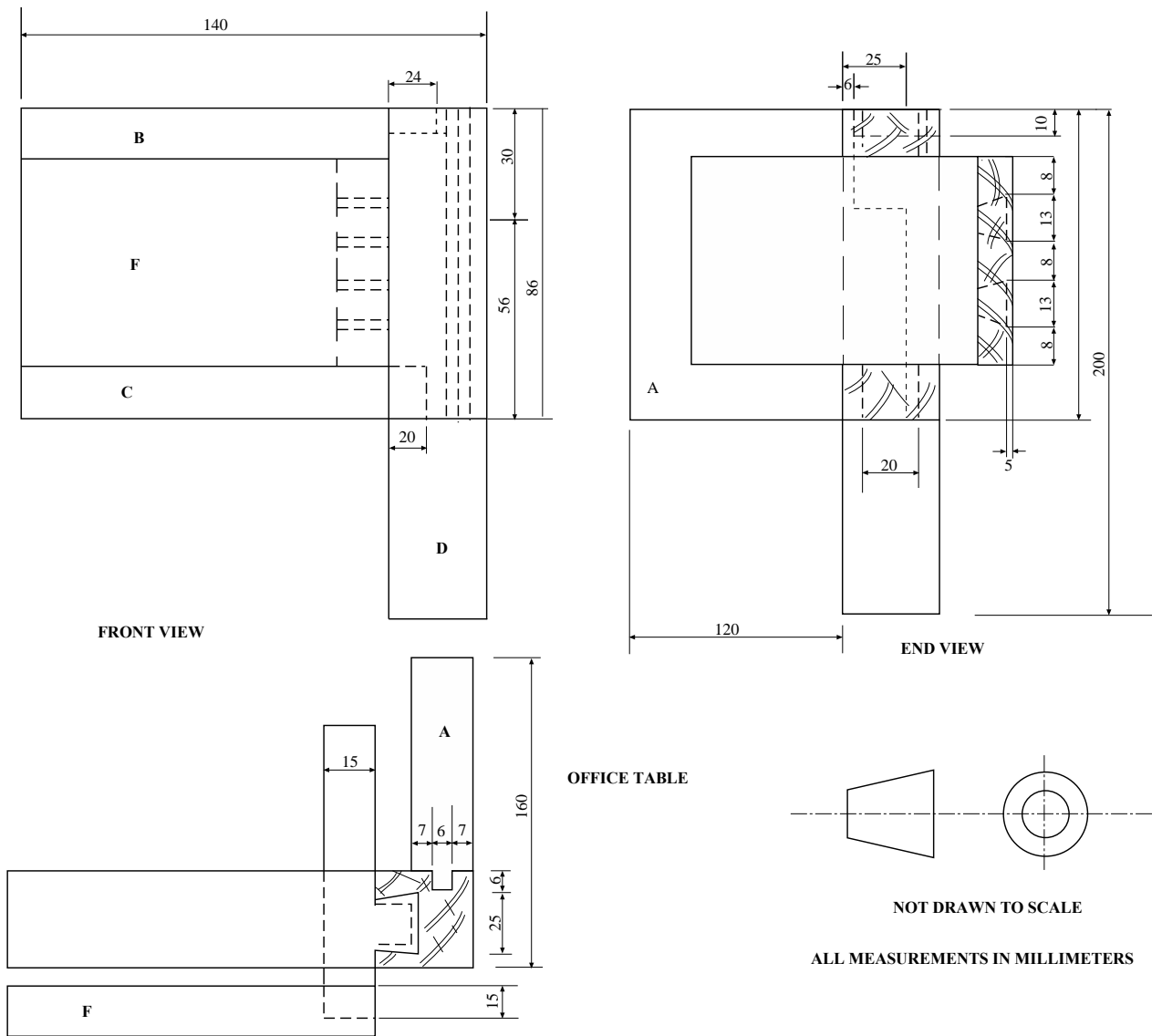


Fig. 2